



**FOXDALE**

**TRADITIONAL**

**CAMBRIDGE  
ISENHOUR  
— HOMES —**



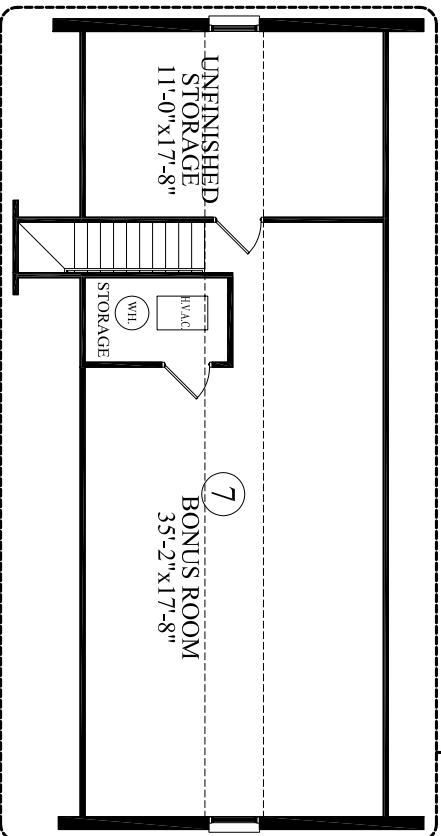
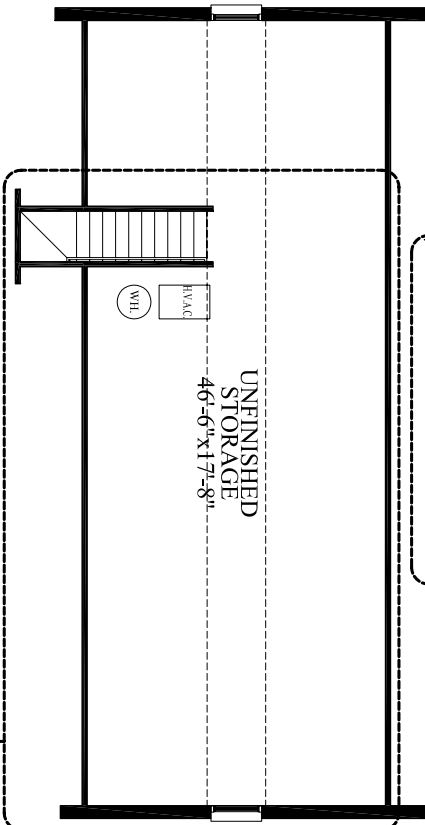
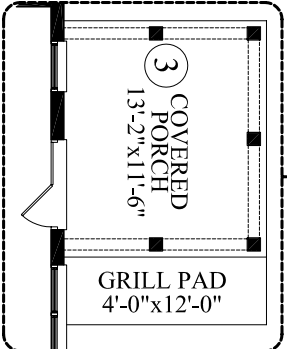
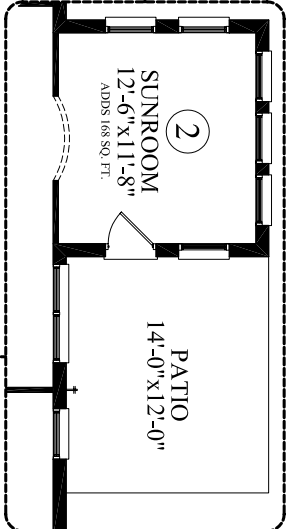
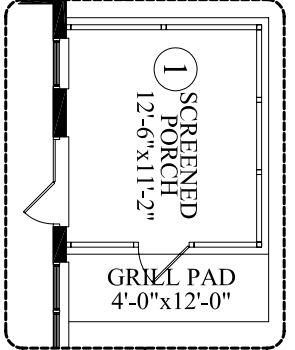
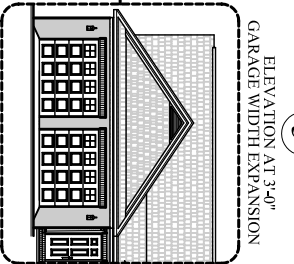
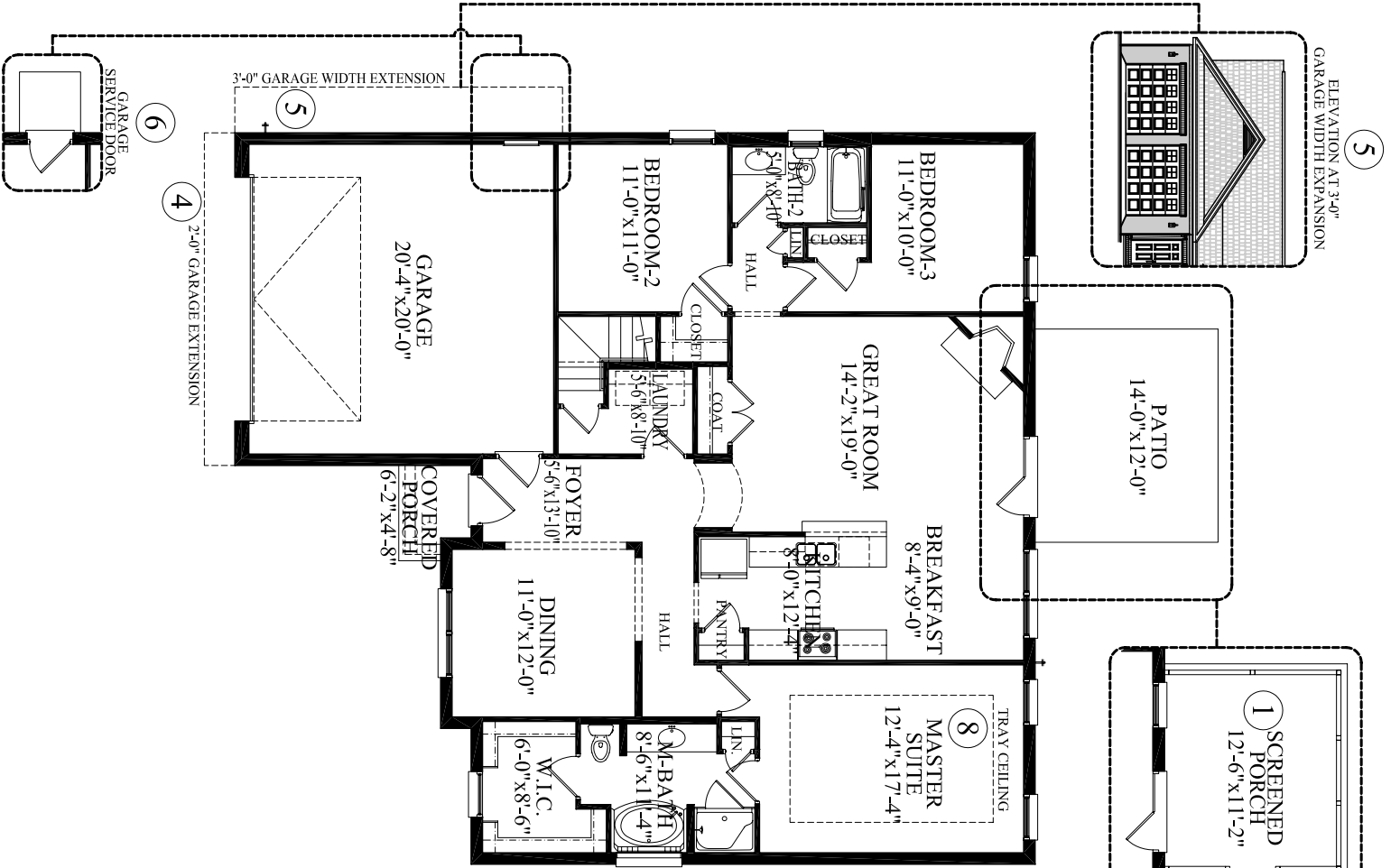
OPTIONS SHOWN: (SITE PERMITTING)

1. SCREENED IN PORCH
2. SUNROOM
3. COVERED PORCH
4. 2'-0" GARAGE EXTENSION
5. 3'-0" GARAGE WIDTH EXTENSION
6. GARAGE SERVICE DOOR
7. BONUS ROOM OPTION
8. MASTER SUITE TRAY CEILING

FIRST LEVEL:	1,660 S.F.
BASE TOTAL:	1,660 S.F.
UNFINISHED STORAGE:	854 S.F.
BEDROOMS:	3
BATHROOMS:	2
WIDTH:	48'-0"
DEPTH:	64'-6"

Watercolors, Illustration & floor plans shown are for marketing purposes only and are subject to change at builder's discretion. Square footage is outside veneer and should be independently verified. This is not a legal document.

07-01-08



FINISHED SECOND FLOOR ADDS 638 SQ. FT.