



HOLBROOK "F"

FRENCH COUNTRY



**CAMBRIDGE
ISENHOUR**
— HOMES —

11
WINDOW
BOX

FIRST LEVEL:	1,584 S.F.
SECOND LEVEL:	314 S.F.
BASE TOTAL:	1,898 S.F.
UNFINISHED STORAGE/	349 S.F.
BEDROOMS:	3
BATHROOMS:	3
WIDTH:	40'-0"
DEPTH:	68'-0"

OPTIONS SHOWN: (SITE PERMITTING)

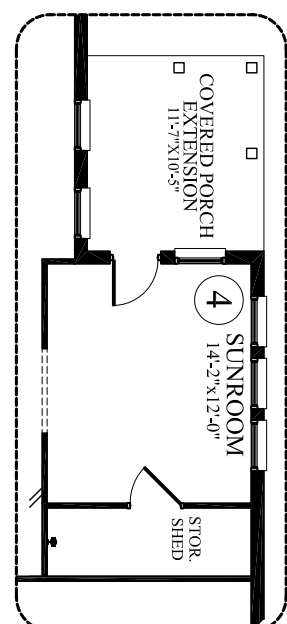
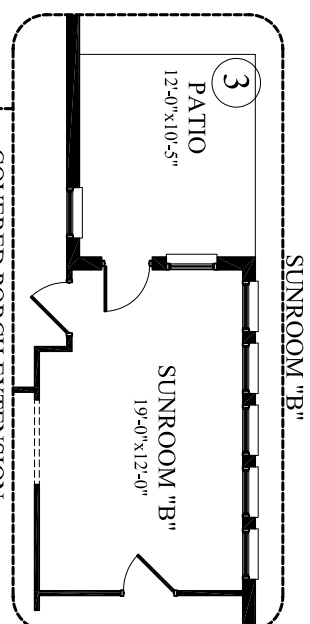
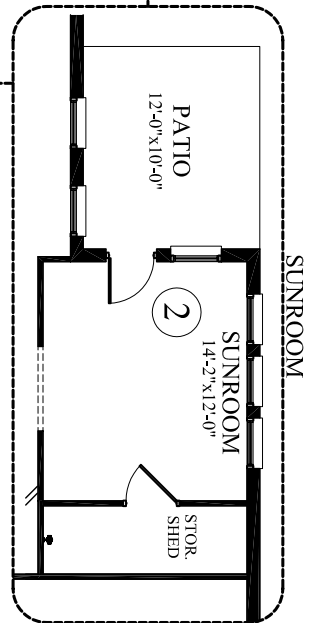
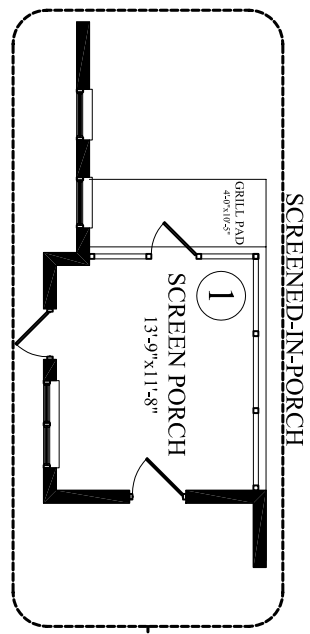
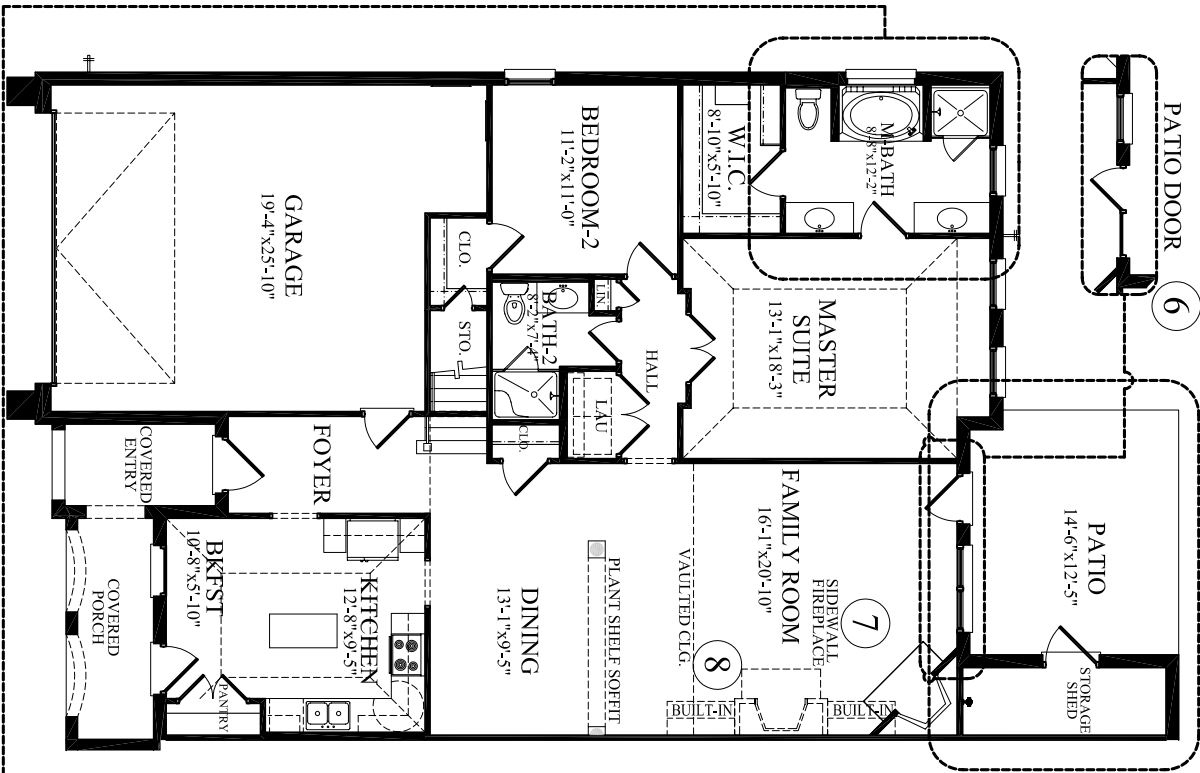
1. SCREENED IN PORCH
2. SUNROOM
3. SUNROOM "B"
4. SUNROOM WITH COVERED PORCH
5. BUMP OUT AT MASTER BATH
6. PATIO DOOR
7. SIDEWALL FIREPLACE
8. BUILT-INS AT SIDEWALL FIREPLACE
9. LINEN CLOSET
10. BONUS ROOM
11. WINDOW BOX
12. WINDOW SEAT
13. CLOSET AT BONUS ROOM

Watercolors, Illustration & floor plans shown are for marketing purposes only and are subject to change at builder's discretion. Square footage is outside veneer and should be independently verified. This is not a legal document.

11-30-07

HOLBROOK "F" FRENCH COUNTRY

FIRST FLOOR



UPPER FLOOR

