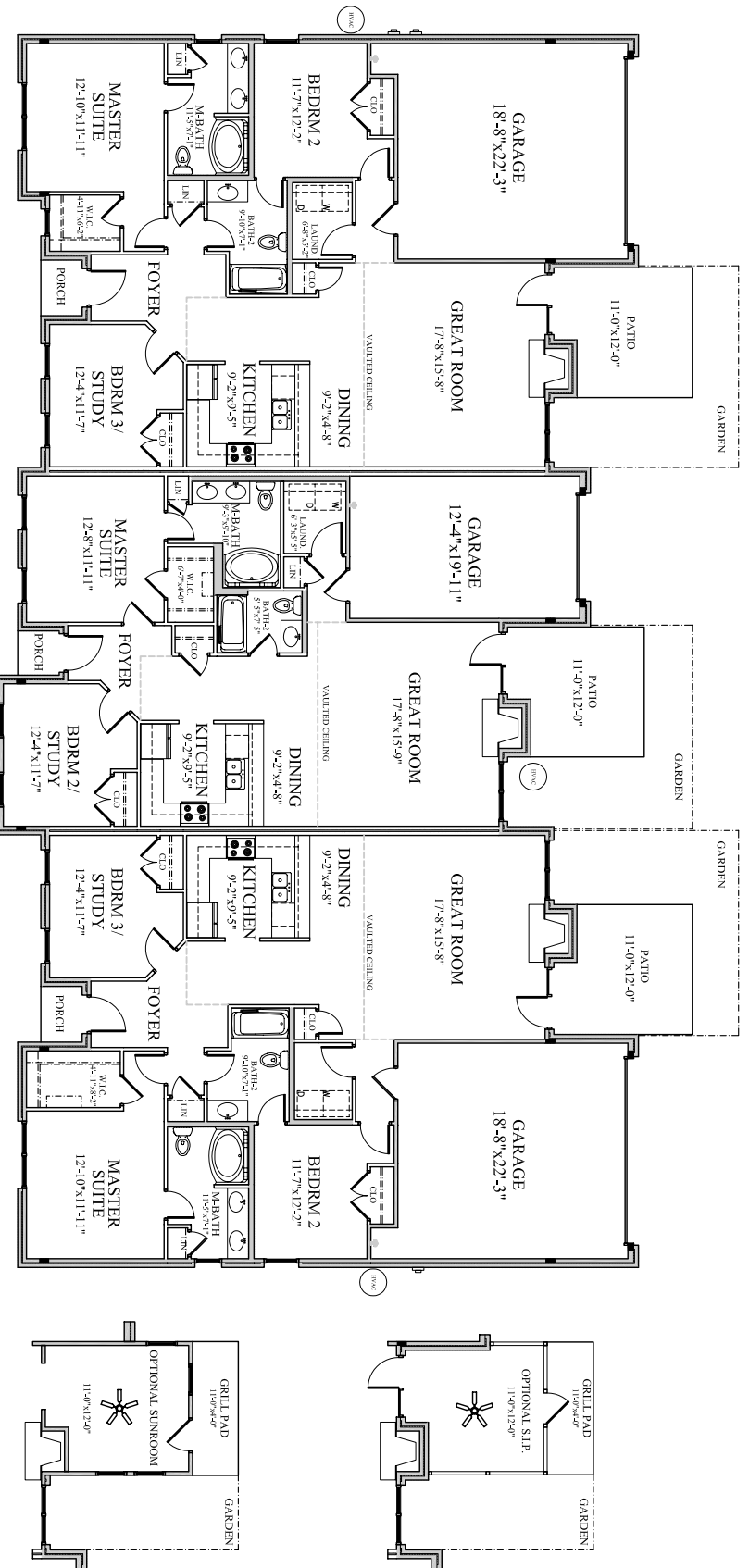


LONG CREEK LUXURY TOWNHOMES - TRADITIONAL



GUILFORD

FIRST FLOOR:	1428 S.F.
BASE TOTAL:	1428 S.F.
BEDROOMS:	3
BATHROOMS:	2
WIDTH:	37'-10"
DEPTH:	53'-9"

the "HARTFORD"

FIRST FLOOR:	1168 S.F.
BASE TOTAL:	1168 S.F.
BEDROOMS:	2
BATHROOMS:	2
WIDTH:	31'-2"
DEPTH:	51'-7"

the "ROWLAND"

FIRST FLOOR:	1440 S.F.
BASE TOTAL:	1440 S.F.
BEDROOMS:	3
BATHROOMS:	2
WIDTH:	37'-10"
DEPTH:	53'-9"

Illustration & floor plans shown are for marketing purposes only and are subject to change at builder's discretion. Square footage should be independently verified. This is not a legal document.