



## TAYLOR

## FRENCH COUNTRY

**CAMBRIDGE  
ISENHOUR  
HOMES**



FRONT ELEVATION "A"

FIRST LEVEL:	2,227 S.F.
SECOND LEVEL:	337 S.F.
BASE TOTAL:	2,564 S.F.
BEDROOMS:	3
BATHROOMS:	3
WIDTH:	50'-0"
DEPTH:	66'-4"
STORAGE:	383 S.F.

### OPTIONS SHOWN: (SITE PERMITTING)

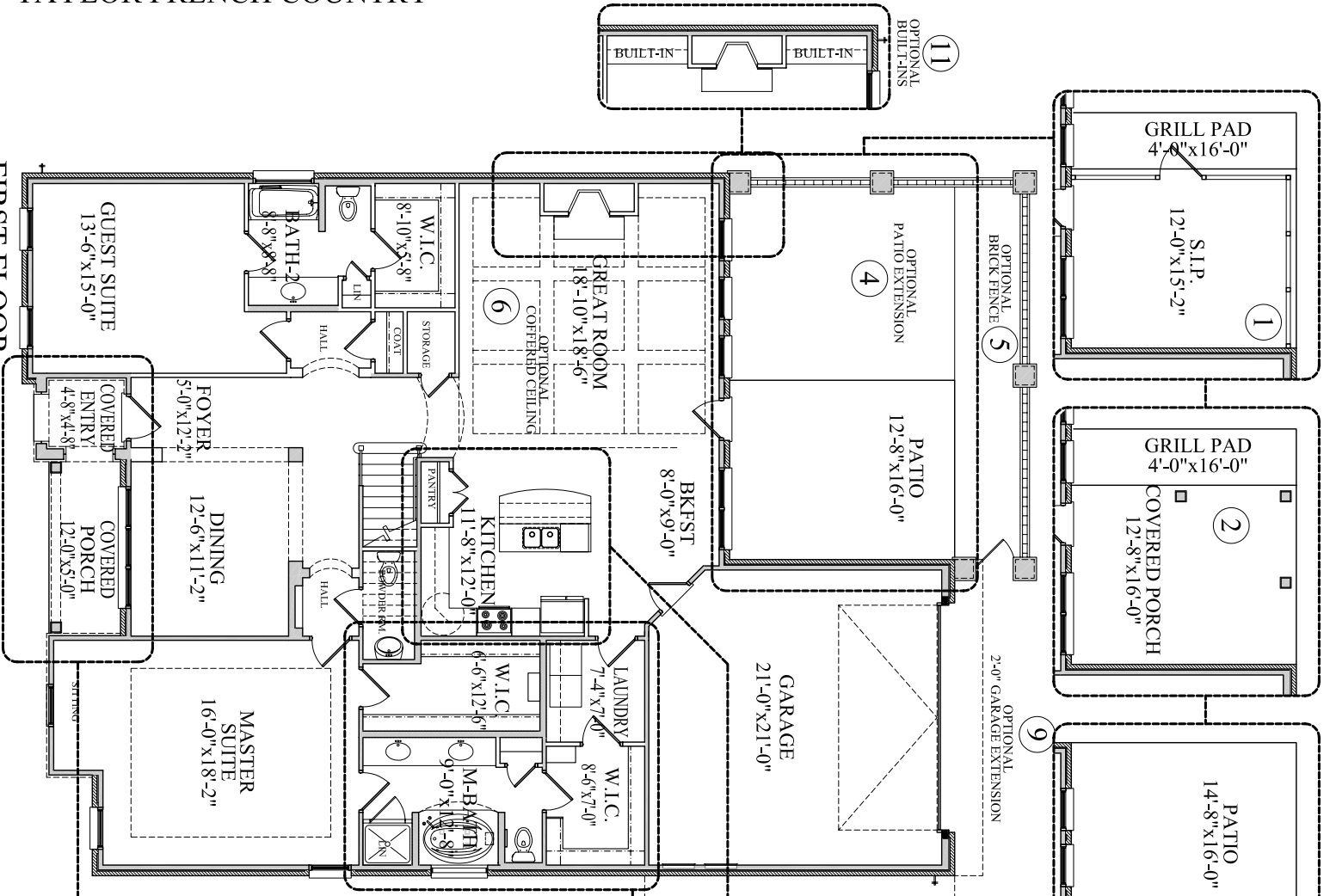
1. SCREENED IN PORCH
2. COVERED PORCH
3. SUNROOM
4. PATIO EXTENSION
5. BRICK FENCE
6. COFFERED CEILING
7. KITCHEN "B"
8. BATH LAYOUT "B"
9. 2'-0" GARAGE EXTENSION
10. 3'-0" GARAGE EXPANSION
11. BUILT-INS
12. DINING EXTENSION
13. BEDROOM 2 ALTERNATE LAYOUT
14. COVERED PORCH EXTENSION
15. SUNROOM WITH COVERED PORCH EXT.
16. BONUS ROOM
17. ARCHES AT DINING ROOM

Watercolors, Illustration & floor plans shown are for marketing purposes only and are subject to change at builder's discretion. Square footage is outside veneer and should be independently verified. This is not a legal document.

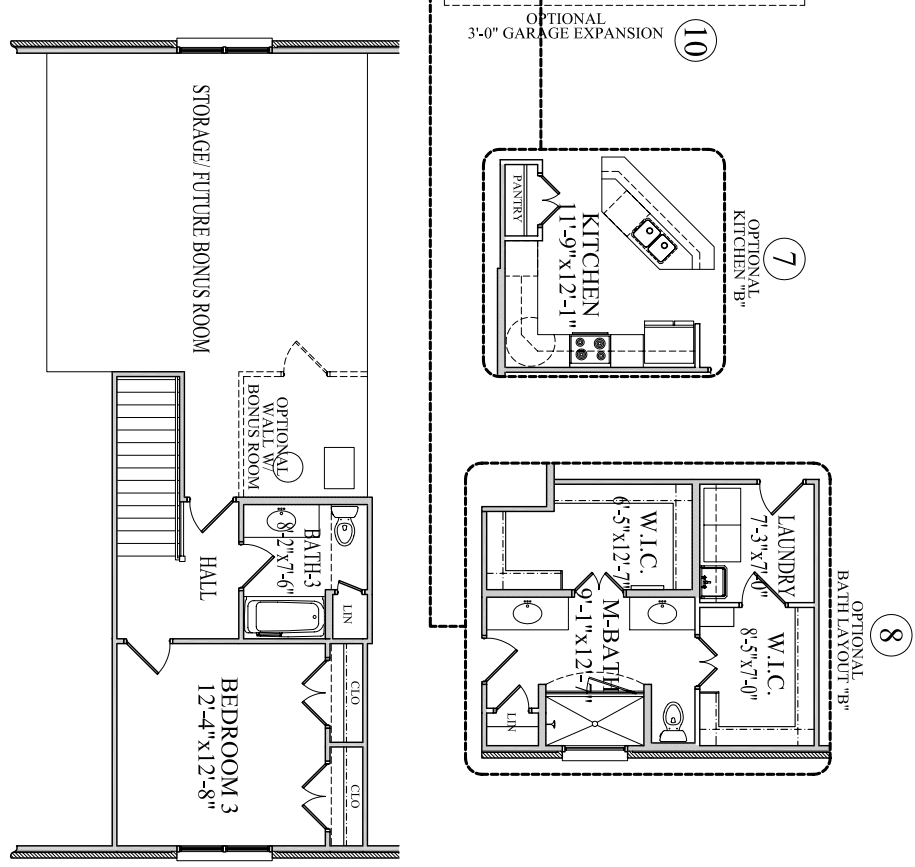
09-24-07

# TAYLOR FRENCH COUNTRY

## FIRST FLOOR



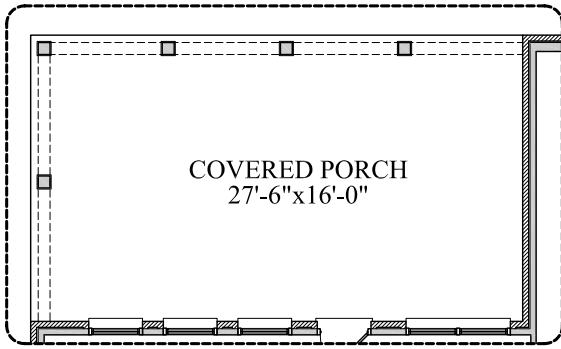
## SECOND FLOOR



# TAYLOR FRENCH COUNTRY

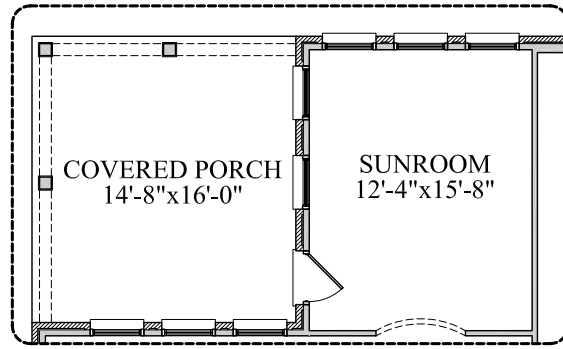
14

OPTIONAL  
COVERED PORCH WITH EXTENSION



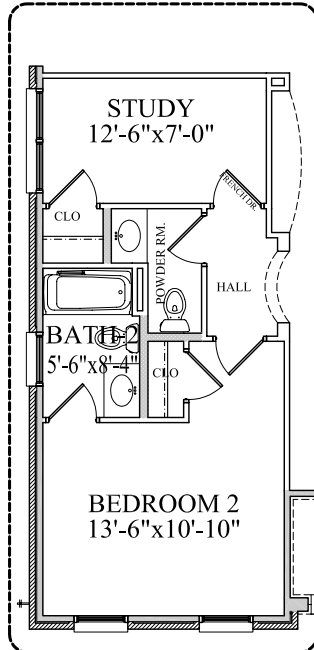
15

OPTIONAL  
SUNROOM WITH COVERED PORCH EXTENSION



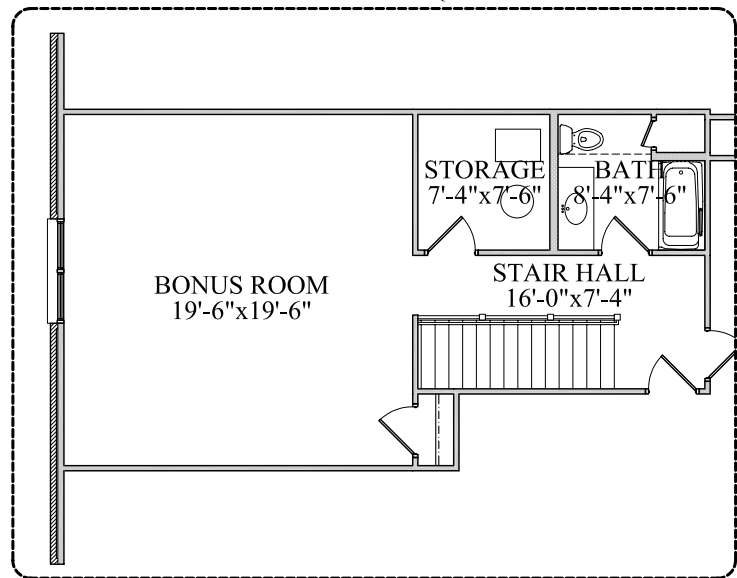
13

OPTIONAL  
BEDROOM LAYOUT "B"



16

OPTIONAL  
BONUS ROOM \*ADDS 454 SQUARE FEET\*



17

OPTIONAL  
ARCH OPENING

